

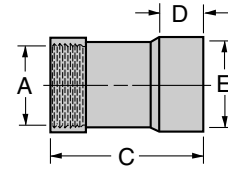
Morris Vacuum Products

Female Reducing Adapter Expanded

Part No.	Size	A-F.I.P.S.	C	D	E-i.d.	Gauge
MRE-2025	2" to 2 1/2"	2"	4 1/4"	1 1/4"	2 1/2"	16

WHEN ORDERING, SPECIFY TYPE OF MATERIAL:

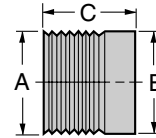
Carbon Steel, Zinc Galv. Coated Steel, Stainless Steel, Aluminum



Male Adapter Nipple

Part No.	Size	A-M.I.P.S.	C	E-i.d.
MAN-2021	2 1/8"	2"	2"	2 1/8"

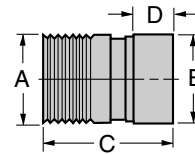
WHEN ORDERING, SPECIFY TYPE OF MATERIAL: Carbon Steel, Zinc Galv. Coated Steel, Stainless Steel, Aluminum



Male Adapter Expanded

Part No.	Size	A-M.I.P.S.	C	D	E-i.d.	Gauge
MME-2021	2" to 2 1/8"	2"	4"	1 1/4"	2 1/8"	16
MME-2525	2 1/2" to 2 1/2"	2 1/2"	4"	1 1/4"	2 1/2"	16
MME-3030	3" to 3"	3"	4 3/4"	1 1/4"	3"	16
MME-3535	3 1/2" to 3 1/2"	3 1/2"	4 3/4"	1 1/4"	3 1/2"	16
MME-4040	4" to 4"	4"	4 3/4"	1 1/4"	4"	16
MME-5050	5" to 5"	5"	5"	1 1/2"	5"	14
MME-6060	6" to 6"	6"	5 1/4"	1 1/2"	6"	14

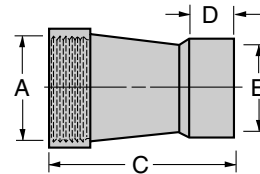
WHEN ORDERING, SPECIFY TYPE OF MATERIAL: Carbon Steel, Zinc Galv. Coated Steel, Stainless Steel, Aluminum



Female Adapter Expanded

Part No.	Size	A-F.I.P.S.	C	D	E-i.d.	Gauge
MFE-2021	2" to 2 1/8"	2"	4"	1 1/4"	2 1/8"	16
MFE-2525	2 1/2" to 2 1/2"	2 1/2"	5"	1 1/4"	2 1/2"	16
MFE-3030	3" to 3"	3"	5 1/4"	1 1/4"	3"	16
MFE-3535	3 1/2" to 3 1/2"	3 1/2"	5 1/2"	1 1/4"	3 1/2"	16
MFE-4040	4" to 4"	4"	6 1/2"	1 1/4"	4"	16
MFE-5050	5" to 5"	5"	6 3/4"	1 1/2"	5"	14
MFE-6060	6" to 6"	6"	7"	1 1/2"	6"	14

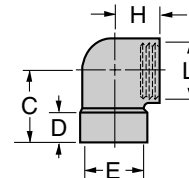
WHEN ORDERING, SPECIFY TYPE OF MATERIAL: Carbon Steel, Zinc Galv. Coated Steel, Stainless Steel, Aluminum



90° Adapter Elbow

Part No.	Size	C	D	E-i.d.	H	L-F.I.P.S.
MAL-2120	2 1/8" to 2"	2 9/16"	1 1/16"	2 1/8"	1 5/8"	2"

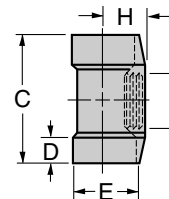
WHEN ORDERING, SPECIFY TYPE OF MATERIAL: Cast Gray Iron or Zinc Coated or Nickel Plated



Adapter Tee

Part No.	Size	C	D	E-i.d.	H	L-F.I.P.S.
MAT-2120	2 1/8" to 2" *	4 13/16"	1 1/16"	2 1/8"	1 9/16"	2"
MAT-2520	2 1/2" to 2"	6 1/2"	1 1/4"	2 1/2"	2 1/8"	2"
MAT-3020	3" to 2"	6 1/2"	1 1/4"	3"	2 3/4"	2"
MAT-3520	3 1/2" to 2"	6 7/8"	1 1/4"	3 1/2"	3 7/16"	2"
MAT-4020	4" to 2"	6 7/8"	1 1/4"	4"	3 7/16"	2"

WHEN ORDERING, SPECIFY TYPE OF MATERIAL: * Cast Gray Iron or Zinc Coated or Nickel Plated. Also available in Cast Aluminum. Other sizes: Carbon Steel, Stainless Steel, Aluminum



For Prices and Delivery

Call Toll Free: 1-800-426-1579

Toll-Free Fax: 1-800-545-1399

E-mail: sales@morriscoupling.com

internet: www.morriscoupling.com

All dimensions are nominal.



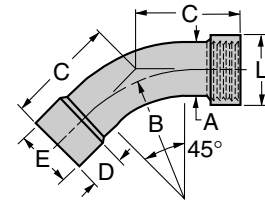
2240 W. 15th St., Erie, PA 16505
Phone: 814-459-1741

Morris Vacuum Products

45° Elbow Female Adapter

Part No.	Size	A-o.d.	Gauge	B	C	D	E-i.d.	L-F.I.P.S.
MEF-2120	2 1/8" to 2"	2 1/8"	16	5"	4 1/16"	1 1/4"	2 1/8"	2"
MEF-2520	2 1/2" to 2"	2 1/2"	16	6"	4 1/2"	1 1/4"	2 1/2"	2"
MEF-2525	2 1/2" to 2 1/2"	2 1/2"	16	6"	4 1/2"	1 1/4"	2 1/2"	2 1/2"

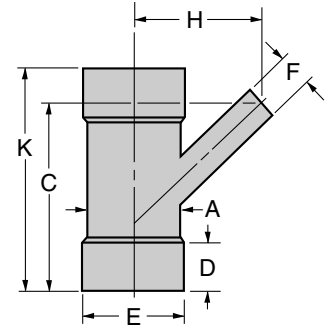
WHEN ORDERING, SPECIFY TYPE OF MATERIAL: Carbon Steel, Zinc Galv. Coated Steel, Stainless Steel, Aluminum



45° Utility Y's Bell Ends (see illustration) also available with straight end. "F" dimension, Straight End only.

Part No.	Size	A-o.d.	Gauge	C	D	E-i.d.	F-o.d.	Gauge	H	K
MUY-2178	2 1/8" x 7/8"	2 1/8"	16	5 1/8"	1 1/4"	2 1/8"	7/8"	18	3 5/32"	6"
MUY-2578	2 1/2" x 7/8"	2 1/2"	16	5 1/8"	1 1/4"	2 1/2"	7/8"	18	3 3/8"	6"
MUY-3078	3" x 7/8"	3"	16	5 1/8"	1 1/4"	3"	7/8"	18	3 5/8"	6"
MUY-3578	3 1/2" x 7/8"	3 1/2"	16	5 1/8"	1 1/4"	3 1/2"	7/8"	18	3 7/8"	6"
MUY-4078	4" x 7/8"	4"	16	5 1/8"	1 1/4"	4"	7/8"	18	4 1/8"	6"

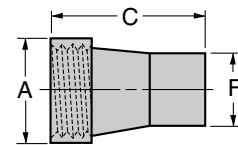
WHEN ORDERING, SPECIFY TYPE OF MATERIAL: Carbon Steel, Zinc Galv. Coated Steel, Stainless Steel, Aluminum



Female Adapter

Part No.	Size	A-F.I.P.S.	C	F-o.d.	Gauge
MFA-2021	2" to 2 1/8"	2"	4"	2 1/8"	16
MFA-2525	2 1/2" to 2 1/2"	2 1/2"	5"	2 1/2"	16
MFA-3030	3" to 3"	3"	5 1/4"	3"	16
MFA-3535	3 1/2" to 3 1/2"	3 1/2"	5 1/2"	3 1/2"	16
MFA-4040	4" to 4"	4"	6 1/2"	4"	16
MFA-5050	5" to 5"	5"	6 3/4"	5"	14
MFA-6060	6" to 6"	6"	7"	6"	14
MFA-8080	8" to 8"	8"	9"	8"	14
MFA-9090	10" to 10"	10"	11"	10"	†
MFA-9292	12" to 12"	12"	13"	12"	†

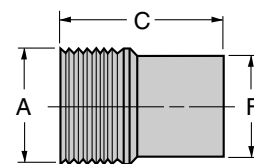
WHEN ORDERING, SPECIFY TYPE OF MATERIAL: Carbon Steel, Zinc Galv. Coated Steel, Stainless Steel, Aluminum
† Consult factory



Male Adapter

Part No.	Size	A-M.I.P.S.	C	F-o.d.	Gauge
MMA-2021	2" to 2 1/8"	2"	4"	2 1/8"	16
MMA-2525	2 1/2" to 2 1/2"	2 1/2"	4"	2 1/2"	16
MMA-3030	3" to 3"	3"	4 3/4"	3"	16
MMA-3535	3 1/2" to 3 1/2"	3 1/2"	4 3/4"	3 1/2"	16
MMA-4040	4" to 4"	4"	4 3/4"	4"	16
MMA-5050	5" to 5"	5"	5"	5"	14
MMA-6060	6" to 6"	6"	5 1/4"	6"	14
MMA-8080	8" to 8"	8"	5 3/4"	8"	14
MMA-9090	10" to 10"	†	6 1/4"	10"	12
MMA-9292	12" to 12"	†	6 1/2"	12"	10

WHEN ORDERING, SPECIFY TYPE OF MATERIAL: Carbon Steel, Zinc Galv. Coated Steel, Stainless Steel, Aluminum
† Consult factory



For Prices and Delivery

Call Toll Free: 1-800-426-1579

Toll-Free Fax: 1-800-545-1399

E-mail: sales@morriscoupling.com

internet: www.morriscoupling.com

All dimensions are nominal.



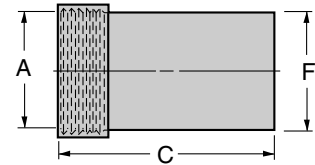
2240 W. 15th St., Erie, PA 16505
Phone: 814-459-1741

Morris Vacuum Products

Female Reducing Adapter

Part No.	Size	A-F.I.P.S.	C	F-o.d.	Gauge
MFR-2025	2" to 2 1/2"	2"	4 1/4"	2 1/2"	16

WHEN ORDERING, SPECIFY TYPE OF MATERIAL: Carbon Steel, Zinc Galv. Coated Steel, Stainless Steel, Aluminum

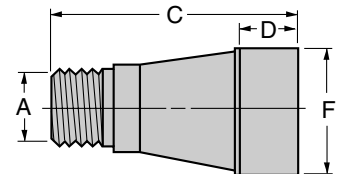


Male Reducing Adapter

Part No.	Size	A-M.I.P.S.	C	D	F-i.d.	Gauge
MMR-2112	2 1/8" to 1 1/4"	1 1/4"	5 3/4"	1 1/4"	2 1/8"	16
MMR-2115	2 1/8" to 1 1/2"	1 1/2"	5 3/4"	1 1/4"	2 1/8"	16

WHEN ORDERING, SPECIFY TYPE OF MATERIAL: Carbon Steel, Zinc Galv. Coated Steel, Stainless Steel, Aluminum

Bell or Straight Ends (F-o.d.= 2 1/8")



Hose Adapters

Part No.	Fits Inlet Valve Part No.	Hose I.D.
MHA-2015	MIV-2020	1 1/2"
MHA-2018	MIV-2020	1.8"
MHA-2020	MIV-2020	2"
MHA-1815	MIV-2018	1 1/2"
MHA-1818	MIV-2018	1.8"
MHA-1515	MIV-2015	1 1/2"

Zinc Galv. Coated Steel

For Prices and Delivery

Call Toll Free: 1-800-426-1579

Toll-Free Fax: 1-800-545-1399

E-mail: sales@morriscoupling.com

internet: www.morriscoupling.com

All dimensions are nominal.



2240 W. 15th St., Erie, PA 16505
Phone: 814-459-1741